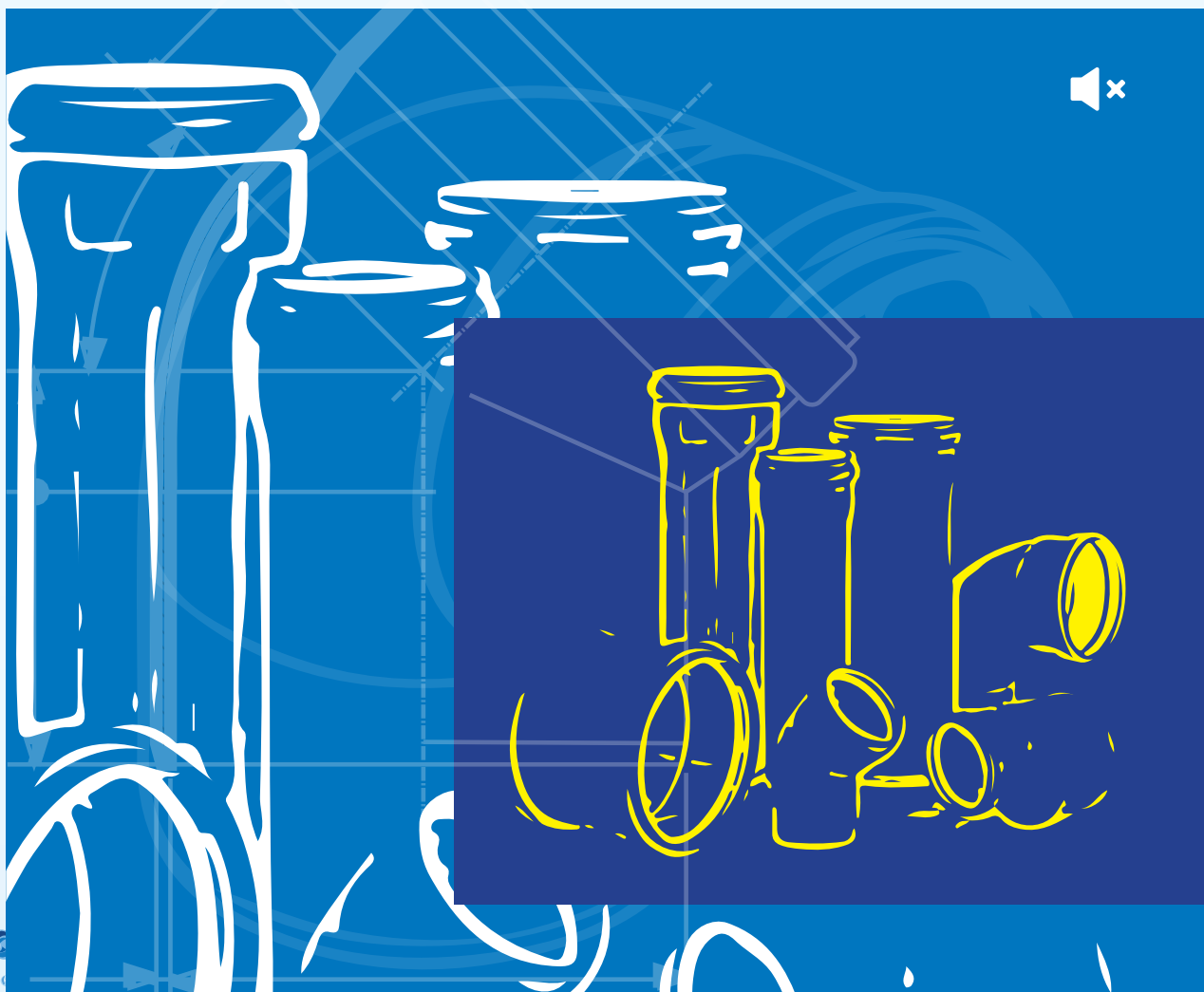


# Silent Flow

UPVC PIPES  
Sound attenuated systems



THE PIPELINE SPECIALIST

## SILENT FLOW

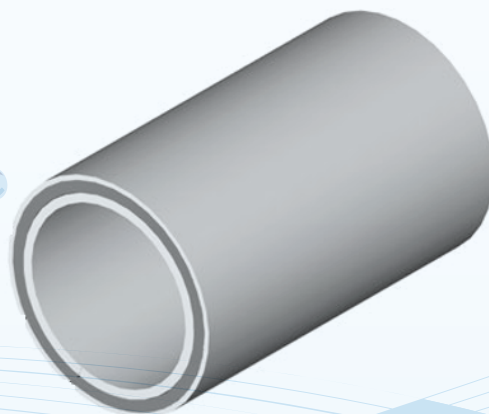
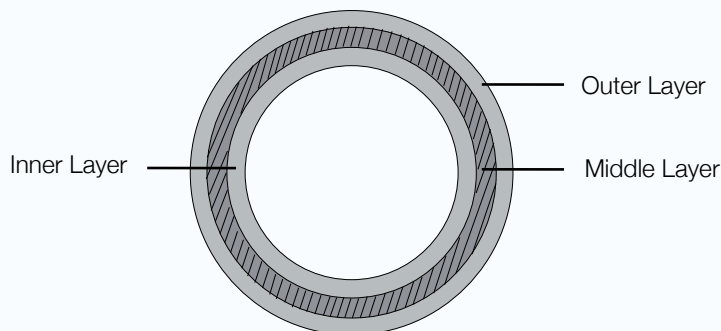
### What is Silent Flow ?

STR silent flow is a combination of PVC pipes, fittings and brackets specially designed to reduce noise emanation during flow of water and waste in the piping system. As such it offers an innovative solution for sound insulation for domestic waste disposal. The function of the system is to lower and/or eliminate the sound discharged from the waste disposal system inside the building.

STR Silent Flow pipes are manufactured from an innovative multilayer structure, recognised as one of the finest technological innovation in the industry. The triple layer technology: (size DN > 110mm)

Silent Flow, Low Noise system is a premium product especially designed for hotels, hospitals, hi-rise buildings, IRS Villas, smart cities and premium projects where regular PVC pipes do not suffice the application requirement. Such projects require a system which is strong enough to meet specific requirements. It has been designed to meet such demands. This thick walled, Silent Flow system is specifically featured with low noise aspects. This makes it suitable for the projects where sound beyond certain decibel level is not desirable. Thus a combination of strength and Low noise aspects has made this product a much better solution for building drainage. This all together new system will set a new trend for that new market segment where expectations are high.

The inner, outer and middle layers are made up of mineralized material which has better sound absorbing characteristics. Thus, the reinforced mineral material will mitigate impacts and vibrations so as to minimize noise pollution and sound waves.



SILENT FLOW

AUG 2023

## SILENT FLOW: PIPE RANGE

### SILENT FLOW: PIPE RANGE

Pipe standard : EN 1329

Low noise system designed to EN12056:2000

Acoustic performance : EN 14366

PIPE DIAMETER	WALL THICKNESS	SOCKET TYPE	
		SW	RRJ
(mm)	(mm)		
50	3.0	✓	✓
75	4.5	✓	✓
110	4.8	✓	✓
160	5.0	✓	✓

Note :

For bigger sizes, please contact our Technical department.

It is highly recommended to go in solvent weld joints for all horizontal installations specially false ceilings and flooring.

However, for sizes DN 75-110mm in vertical position, the rubber ring joints shall be the preferred installation type.

PIPE RANGE

# SILENT FLOW: FITTINGS RANGE

## SILENT FLOW: FITTINGS RANGE

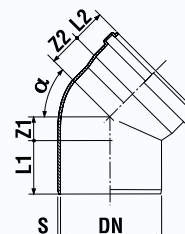
High Quality : Make : REDI

**phono)))line**

Sound performance certified 12 dB at 2/l/s flow rate  
Fire resistance Class B s2 d0

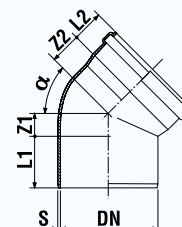
### BEND/COUDE 45 DEG

Size (DN) mm	Code
40	REEL4-PH040
50	REEL4-PH050
75	REEL4-PH075
110	REEL4-PH110
160	REEL4-PH160



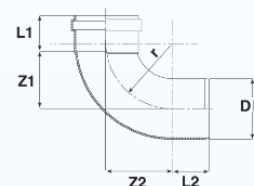
### BEND/COUDE 87 DEG

Size (DN) mm	Code
40	REEL9-PH040
50	REEL9-PH050
75	REEL9-PH075
110	REEL9-PH110
160	REEL9-PH160



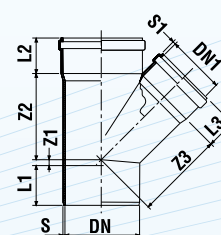
### LONG RADIUS BEND 87 DEG

Size (DN) mm	Code
110	REEL9-PH110L



### Y BRANCH / CULOTTE 45 DEG

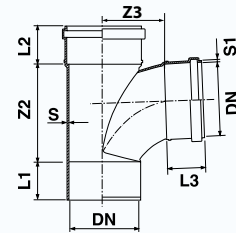
Size (DN) mm	Code
40/40	REET4-PH040
50/50	REET4-PH050
75/75	REET4-PH075
110/110	REET4-PH110
160/160	REET4-PH160DS



# SILENT FLOW: FITTINGS RANGE

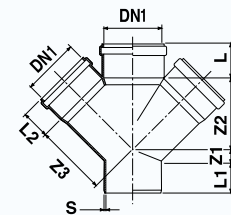
## LONG RADIUS BRANCH/T GRANDE RAYON

Size (DN) mm	Code
110	REET4-PH110DS



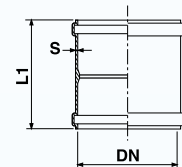
## DOUBLE BRANCH 45 DEG/CULOTTE DOUBLE 45 DEG

Size (DN) mm	Code
110/110/110	RE-RV144PH



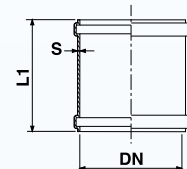
## COUPLER WITH CENTRAL STOP/MANCHON AVEC BUTEE

Size (DN) mm	Code
75	REC04 - PH075
110	REC04 - PH110



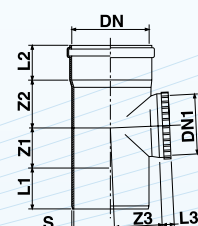
## SLIP COUPLER

Size (DN) mm	Code
40	RCOU-PH040S
50	RCOU-PH050S
110	RCOU-PH110S
160	RCOU-PH160S



## ACCESS PIPE

Size (DN) mm	Code
110	REET9 - PH110

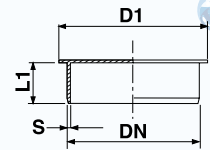


FITTINGS RANGE

# SILENT FLOW: FITTINGS RANGE

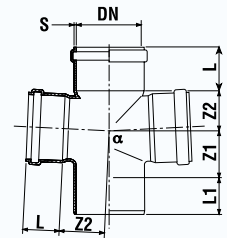
## SOCKET PLUG / CAP

Size (DN) mm	Code
40	RECAP-PH040
50	RECAP-PH050
110	RECAP-PH110



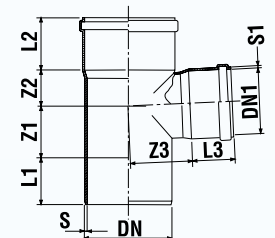
## DOUBLE BRANCH 90 DEG

Size (DN) mm	Code
110	RE-RV188PH



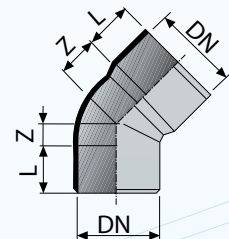
## BRANCH/TEE

Size (DN) mm	Code
50X50X90 deg	REET9-PH050DS
110X110x90 deg	REET9-PH110DS
110X50x90 deg	RERT9-PH1105DS
110x40x45 deg	RERT4-PH1104DS
110X50X45 deg	RERT4-PH1105DS
110X75X45 deg	RERT4-PH1107DS
160X110X45 deg	RERT4-PH16011DS



## BEND 45°

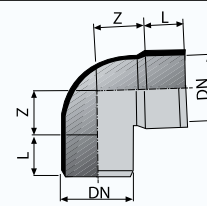
Size (DN) mm	Code
110	REEL4-PH110SW



## SILENT FLOW: FITTINGS RANGE

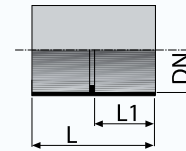
### BEND 87°30'

Size (DN) mm	Code
110	REEL9-PH110SW



### COUPLER WITH CENTRAL STOP

Size (DN) mm	Code
110	REC04-PH110SW



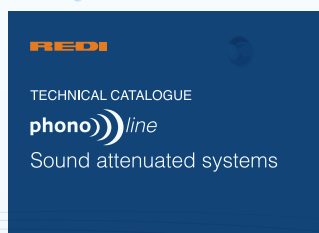
### PHONOKLIP BRACKETS

Size (DN) mm	Code
50 M7	FF-PHCLIP507
50 M8	FF-PHCLIP508
75 M7	FF-PHCLIP757
75 M8	FF-PHCLIP758
110 M8	FF-PHCLI110
160 M10	FF-PHCLI160



\*Solvent weld fittings range complying to EN 1329 manufactured in off-white colour can as well be used for low noise application. Refer to Fittings range as per document on page 23.

Reference:  
Source of technical information from



FITTINGS RANGE

Manufactured by STR Marketing Ltd  
 Certified MS ISO 9001:2015 / Carbon Footprint independently verified by ETC-Africa. A member of the Carbon Protocol of South Africa.