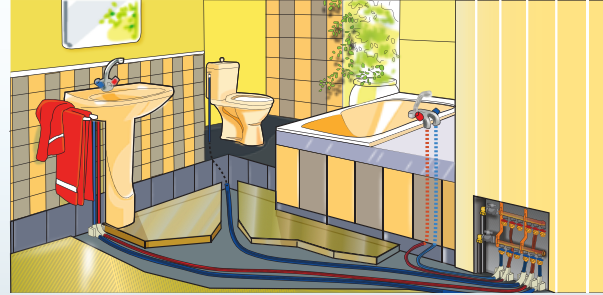


PE-RT Pipes Plain Ended

as per
ISO 22391-2



Material: Polyethylene raised temperature (Type 1)
Colour: Metallic Grey (Silver)
Dimension: mm
Trademark: PE-RT

Field of application:

Plastics piping systems for hot and cold water installations - polyethylene of raised temperature resistance (PE-RT)

GENERAL TECHNICAL CHARACTERISTICS

Geometrical Characteristics

- Dimensions
- Mean outside diameters
- Wall Thickness of pipes

Standard Requirements

- Clause 6.1.1 As per ISO 3126
- Clause 6.2.1 Table 3 Class A
- Clause 6.2.2 Table 3 Class A

Mechanical Characteristics

- Resistance to internal pressure

Clause 7 Table 8 (9.9 Mpa/1 hour @20°C)

Physical Characteristics

- Longitudinal Reversion

Clause 8 Table 10 ($\leq 2\%$)

Joint tests (Fitness for Purpose)

- Internal Pressure test

ISO 22391-5 Clause 4.2 (4.5 Mpa/1000hours @80°C)

| DN | PN10 @20°C PN4 @70°C | DI | Pipes Series S | SDR |
|----|----------------------|------|----------------|-----|
| 16 | 1.8 | 12.4 | 4 | 9 |
| 20 | 2.3 | 15.4 | 4 | 9 |
| 25 | 2.3 | 20.4 | 5 | 11 |
| 32 | 2.9 | 26.2 | 5 | 11 |

SDR : Standard dimension ratio = Outside diameter / Nominal wall thickness

Class 4: PN10@20°C, PN4@70°C

Delivered with: blue corrugated sleeve for cold water
red corrugated sleeve for hot water

Note: The entire PERT system is durable and 100 % recyclable

Manufactured by PPP Piping Systems Ltd - Mauritius MS ISO 9001:2008 & MS ISO 14001:2004